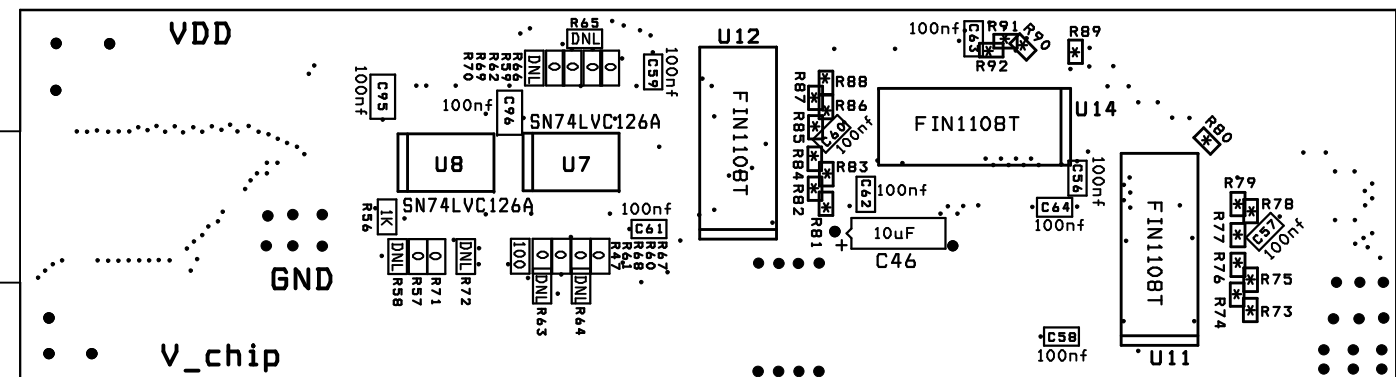


TOP ASSEMBLY DRAWING UCPD INNER LADDER DRIVER BD - REV.0.1 - 09/11/2012

NOTES:

1. ALL PARTS ARE SMD AND LOADED THIS SIDE.
2. * = RESISTOR VALUES ARE 100 OHMS, SIZE 0201.
THERE ARE NO MARKINGS ON THE BOARD FOR THESE PARTS, EXCEPT R93 & R94.
3. REFERENCE: BILL OF MATERIALS:
UCPD INNER LADDER DRIVER BD-REV0-BOM-090612.xlsx.



UCPD INNER LADDER DRIVER BD - REV.0.1 - 09/11/2012
SILKSCREEN TOP LAYER-RIGID BDS (.SST)